

SSFA comparison

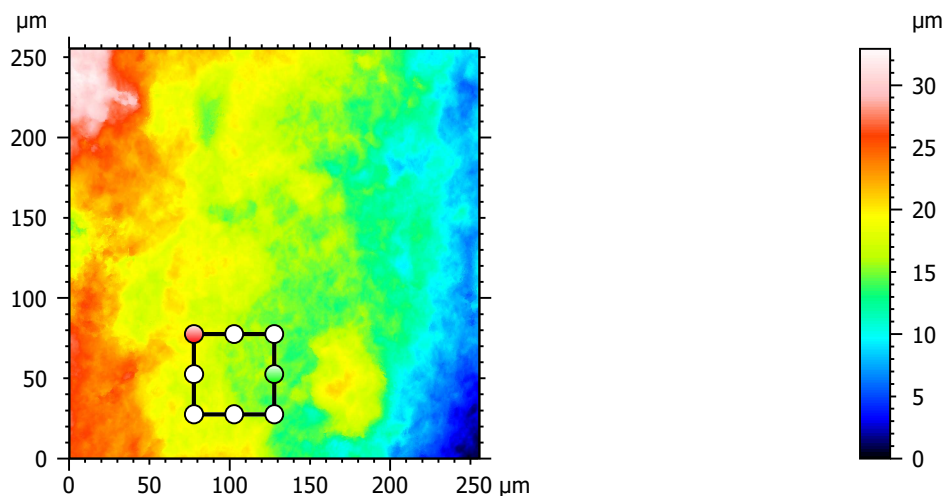
Template to process all lithic surfaces acquired with the Zeiss LSM 800 with the 50x/0.95 objective.

A. Processing

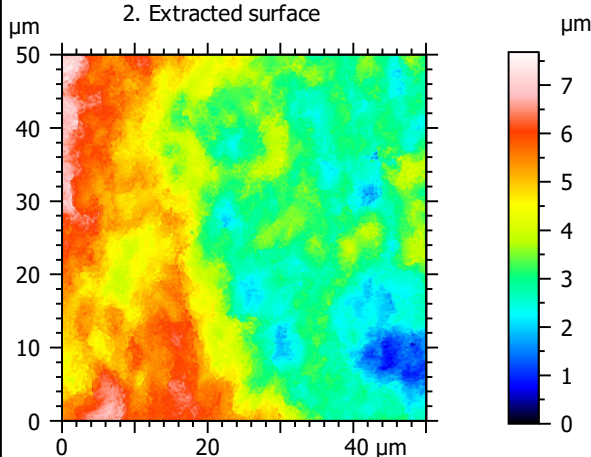
Identity card

Name:	FLT3-10_LSM2_50x-0.95_20190731_Area1_Topo		
File path:	D:\Data\3Ddata\SSFA\Lithics\Original surfaces\FLT3-10_LSM2_50x-0.95_20190731_Area1_Topo.sur		
Created on:	7/31/2019 2:29:33 PM		
Studiable type:	Surface		
Axis:	X		
Length:	255.5	μm	
Size:	3000	points	
Spacing:	0.08519	μm	
Axis:	Y		
Length:	255.5	μm	
Size:	3000	points	
Spacing:	0.08519	μm	
Axis:	Z		
Layer type:	Topography		
Length:	32.92	μm	
Size:	65532	digits	
Spacing:	0.0005024	μm	
NM-points ratio:	0.000 % (0 Pts)		

1. Acquired surface

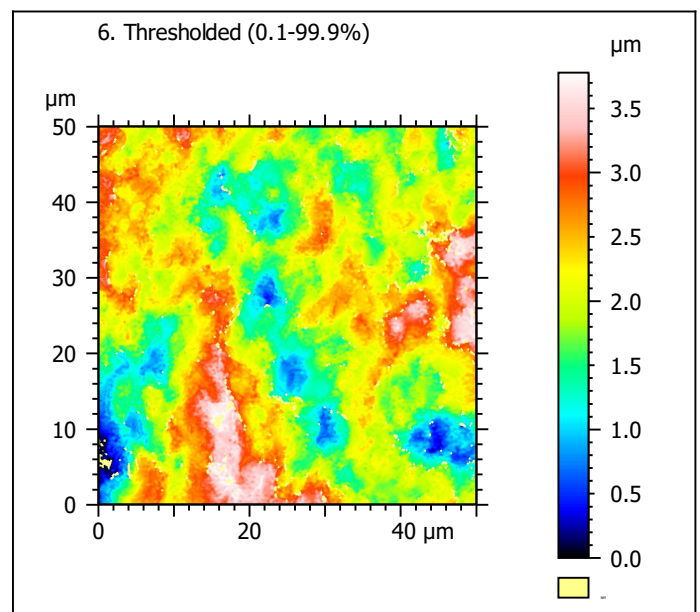
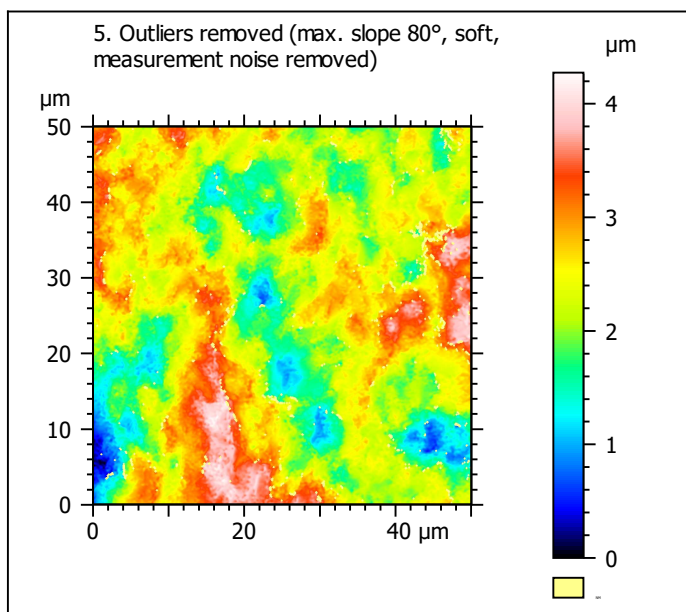
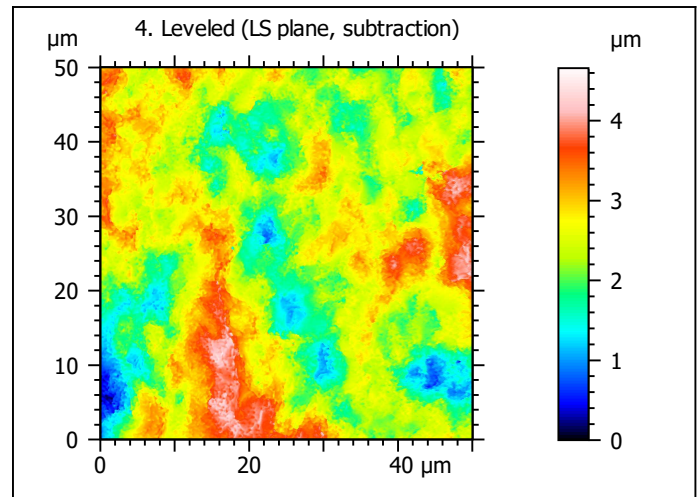
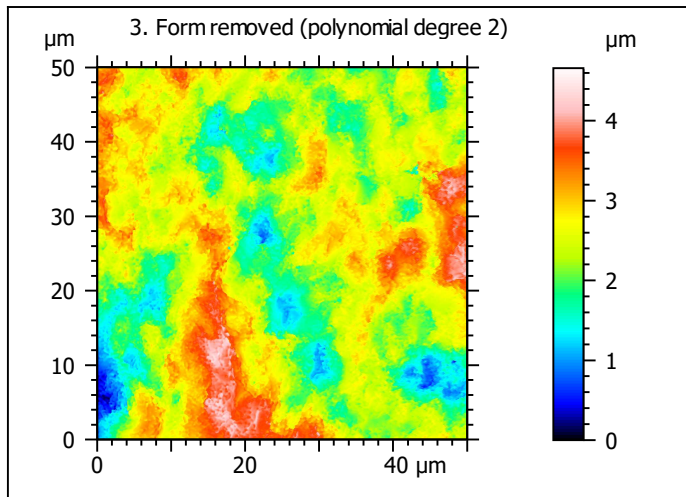


2. Extracted surface



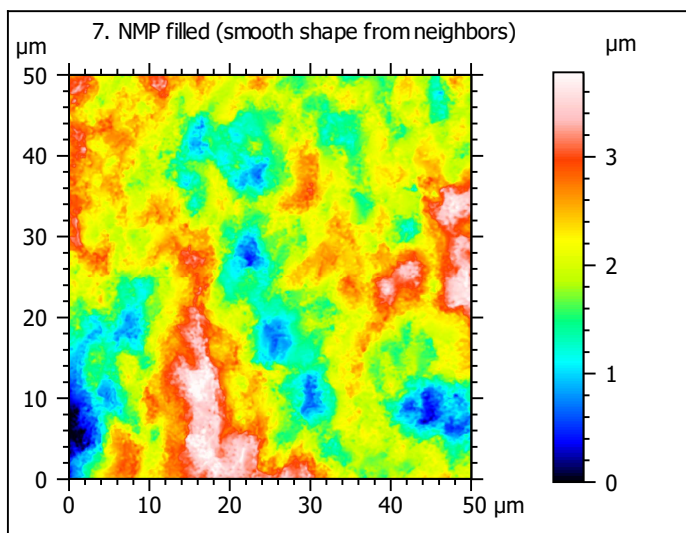
Identity card

Name:	FLT3-10_LSM2_50x-0...opo > Extracted area		
Axis:	X		
Length:	50.00	μm	
Size:	588	points	
Axis:	Y		
Length:	50.00	μm	
Size:	588	points	
Axis:	Z		
Layer type:	Topography		
Length:	7.683	μm	
Size:	15293	digits	
NM-points ratio:	0.000 % (0 Pts)		

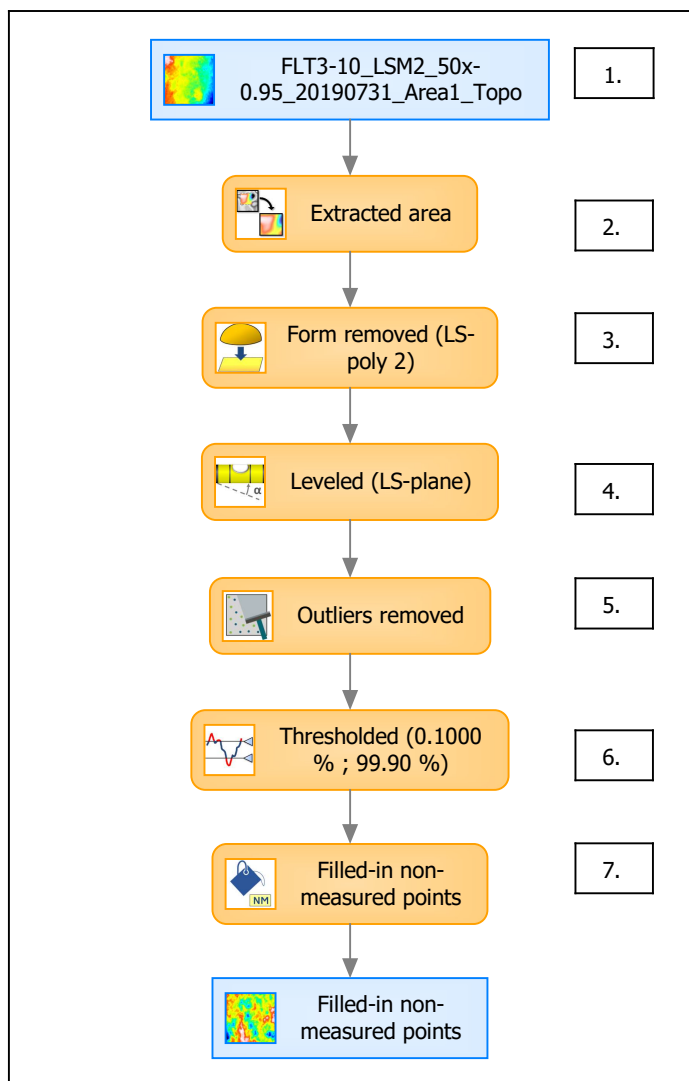


Identity card	
Name:	FLT3-10_LSM2_50x-0...e) > Outliers removed
Axis:	Z
NM-points ratio:	2.017 % (6972 Pts)

Identity card	
Name:	FLT3-10_LSM2_50x-0...0.1000 % ; 99.90 %)
Axis:	Z
NM-points ratio:	2.211 % (7646 Pts)



B. Summary



Identity card

Name: FLT3-10_LSM2_50x-0.95_20190731_Area1_Topo > Extracted are...resholded (0.1000 % ; 99.90 %) > Filled-in non-measured points

Studiable type: Surface

Axis: X

Length: 50.00 μm

Size: 588 points

Spacing: 0.08519 μm

Axis: Y

Length: 50.00 μm

Size: 588 points

Spacing: 0.08519 μm

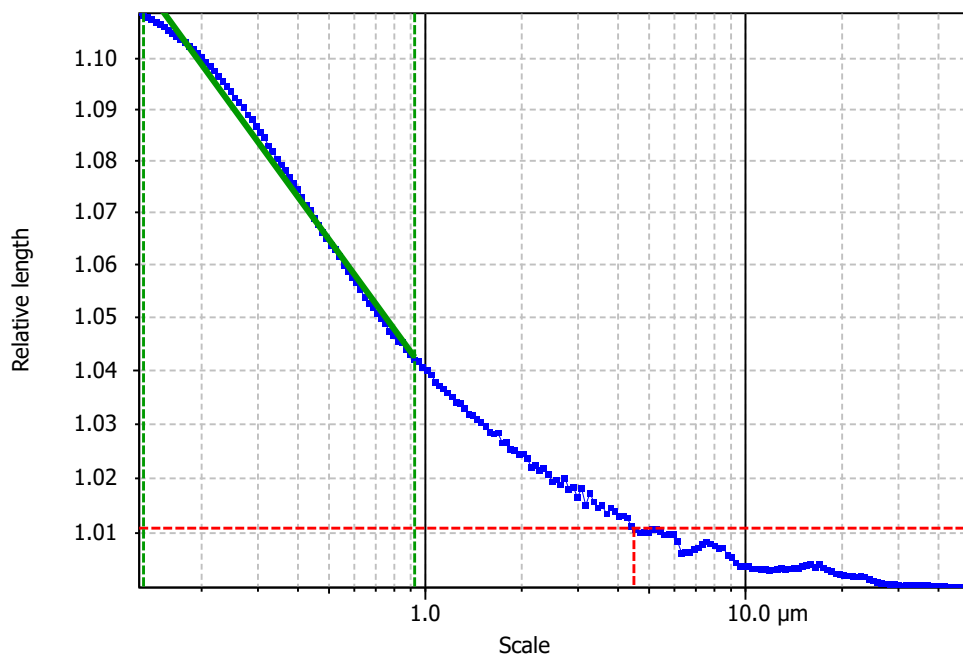
Axis: Z

Layer type: Topography

Length: 3.779 μm

Size: 7522 digits

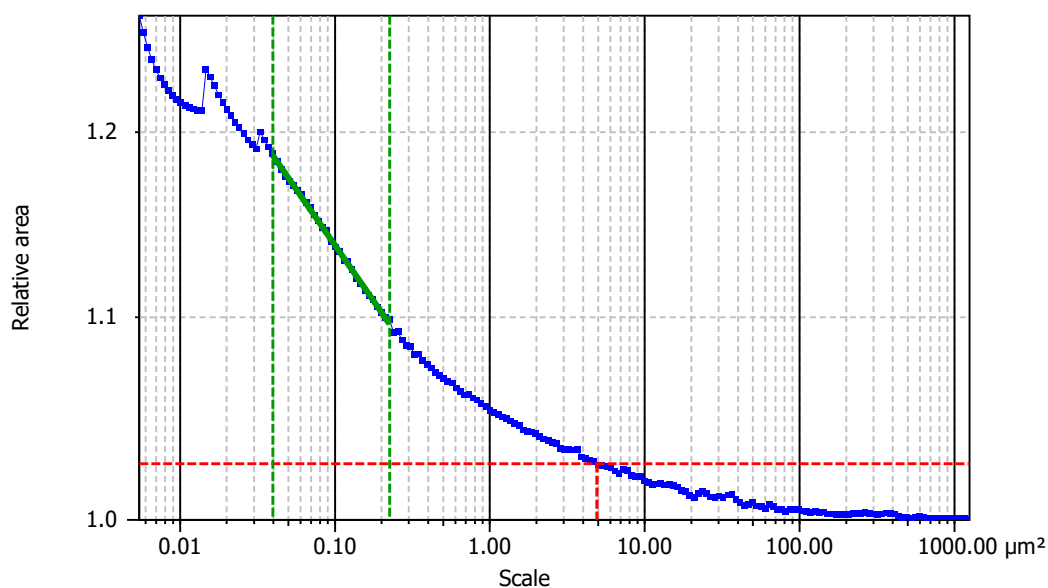
Spacing: 0.0005024 μm

**Information**

Method	Length-scale (rows)
--------	---------------------

Parameters

Parameters	Value	Unit	Comment
epLsar	0.002684		Length-scale anisotropy (Sfrax) (1.8 μm, 5°)
NewEplsar	0.01665		Length-scale anisotropy (1.8 μm, 5°)

**Information**

Method	Area-scale (four corners)
--------	---------------------------

Parameters

Parameters	Value	Unit	Comment
R ²	0.9986		Reg. coefficient R ²
Asfc	45.73		Fractal complexity
Smfc	0.1005	μm ²	Scale of max complexity
HAsfc9	0.09252		Heterogeneity of Asfc (3x3)
HAsfc81	0.1888		Heterogeneity of Asfc (9x9)